

ALGORYTE PRESENTS

ROAD TO BECOME THE ALPHA GAMER//



×

algoryte

×



algor^{ryte}

A NEW AGE OF



GAMING AND REALITY



IMMERSIVE GAMES



VIRTUAL REALITY



METAVEVERSE

A man with short brown hair and glasses, wearing a white button-down shirt, is sitting at a desk in an office. He has his hands pressed against his face, covering his eyes, suggesting a state of stress, frustration, or being overwhelmed. In front of him is a large black computer monitor. The background shows a blurred office environment with a window and some office equipment. The overall lighting is soft, with a slight blue tint on the left side of the image.

**WHAT ARE YOU
MISSING OUT ON?**

A photograph of two people, a man and a woman, sitting at a desk in a dimly lit office at night. They are looking at a computer monitor. A desk lamp is on, casting a warm glow. The background shows a window with a view of the city at night.

RIGHT SKILLS AND TRAINING



SO WHAT IS

ROAD TO BECOME THE ALPHA GAMER//?



**WHAT IS ART
TO YOU?**





LEONARDO DICAPRIO KATE WINSLET
TITANIC

We Can Do It!

Support War Effort
33
USA

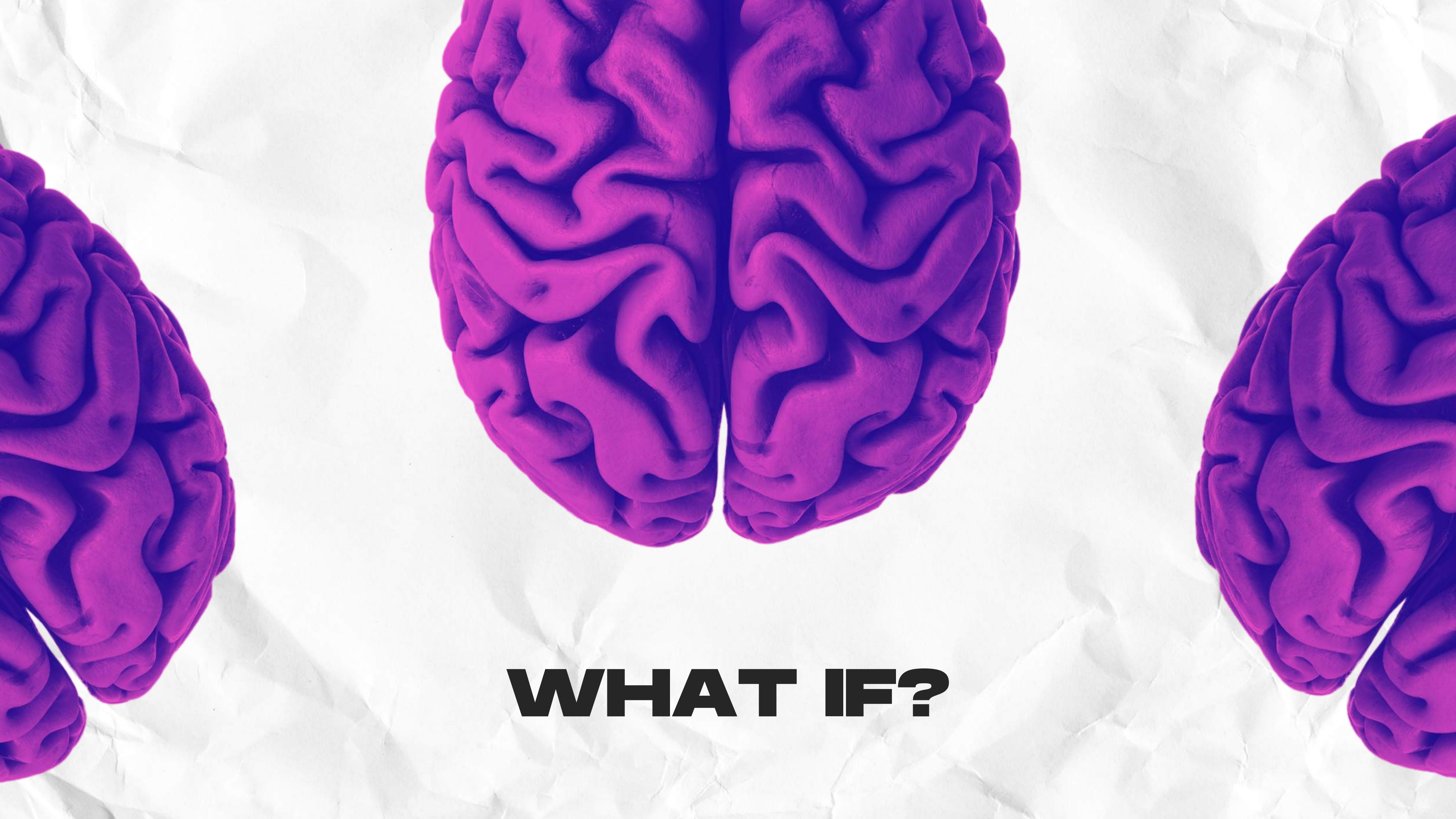
Nintendo GAME BOY



**WHERE DO WE GO
FROM HERE?**



ITS ALL REAL!



WHAT IF?

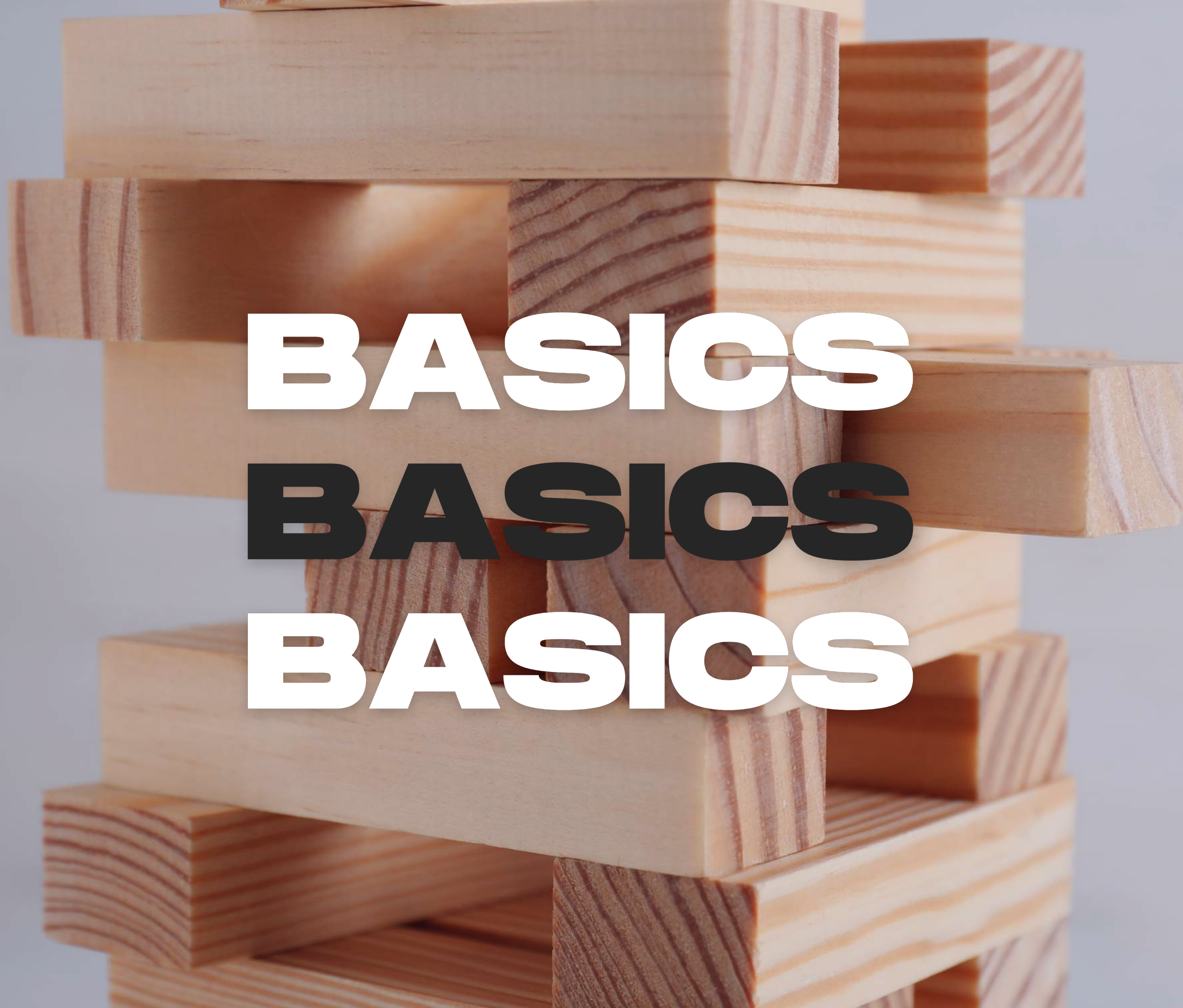


Y'ALL DID THAT!

NOW BACK TO REGULAR PROGRAMMING

A photograph of a game development team in a studio. A woman with a blue bandana and a black t-shirt stands on the left, pointing at a whiteboard. Several men are gathered around the whiteboard, looking at character designs and diagrams. The room is dimly lit with desk lamps, and there are various items on the desks, including a headset and a pink sticky note. The background features a large mural of a character with horns and a plaid shirt. The text "GAME DEVELOPMENT" is overlaid in large, white, bold letters across the center of the image.

GAME DEVELOPMENT



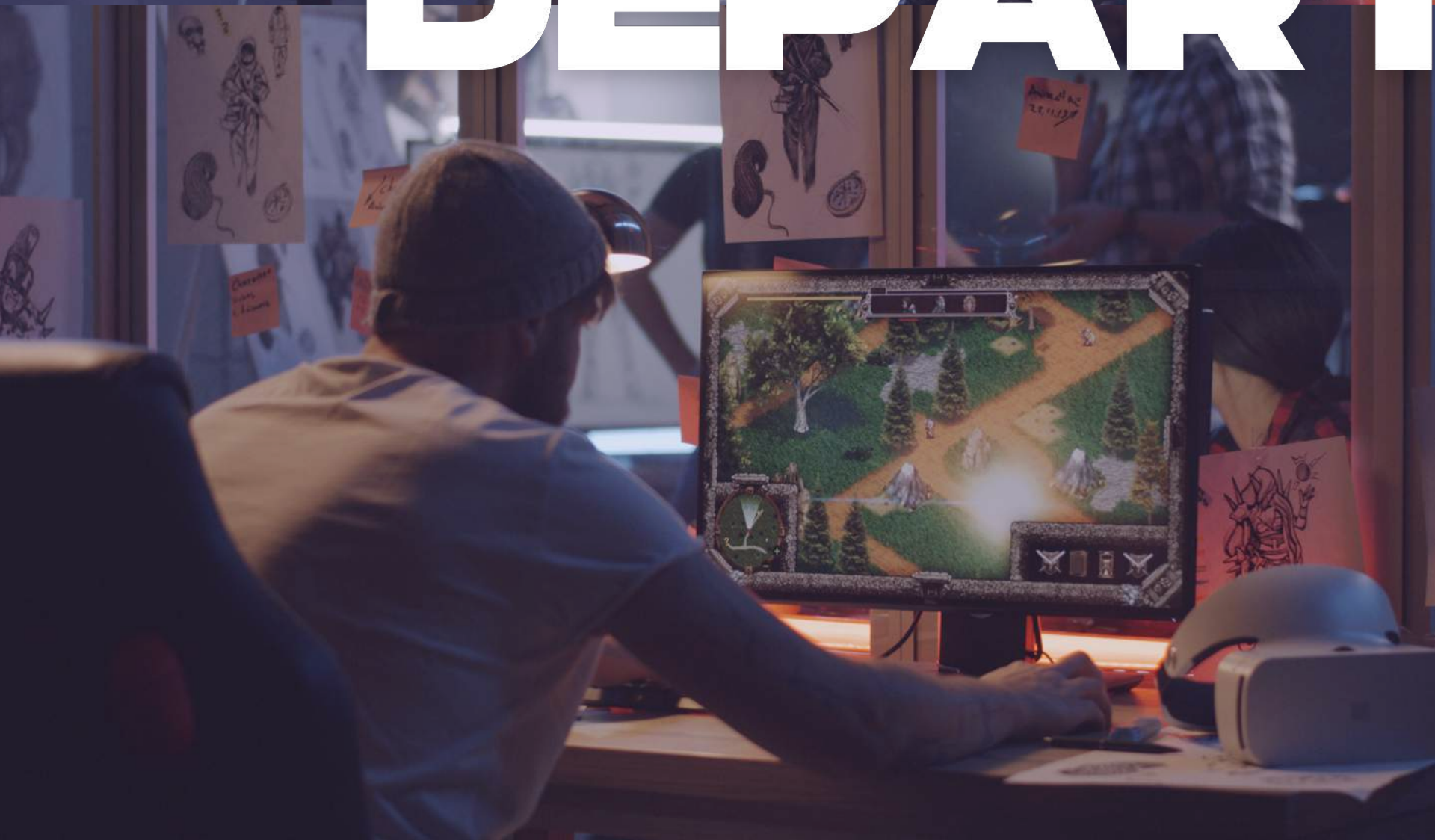
BASICS

BASICS

BASICS



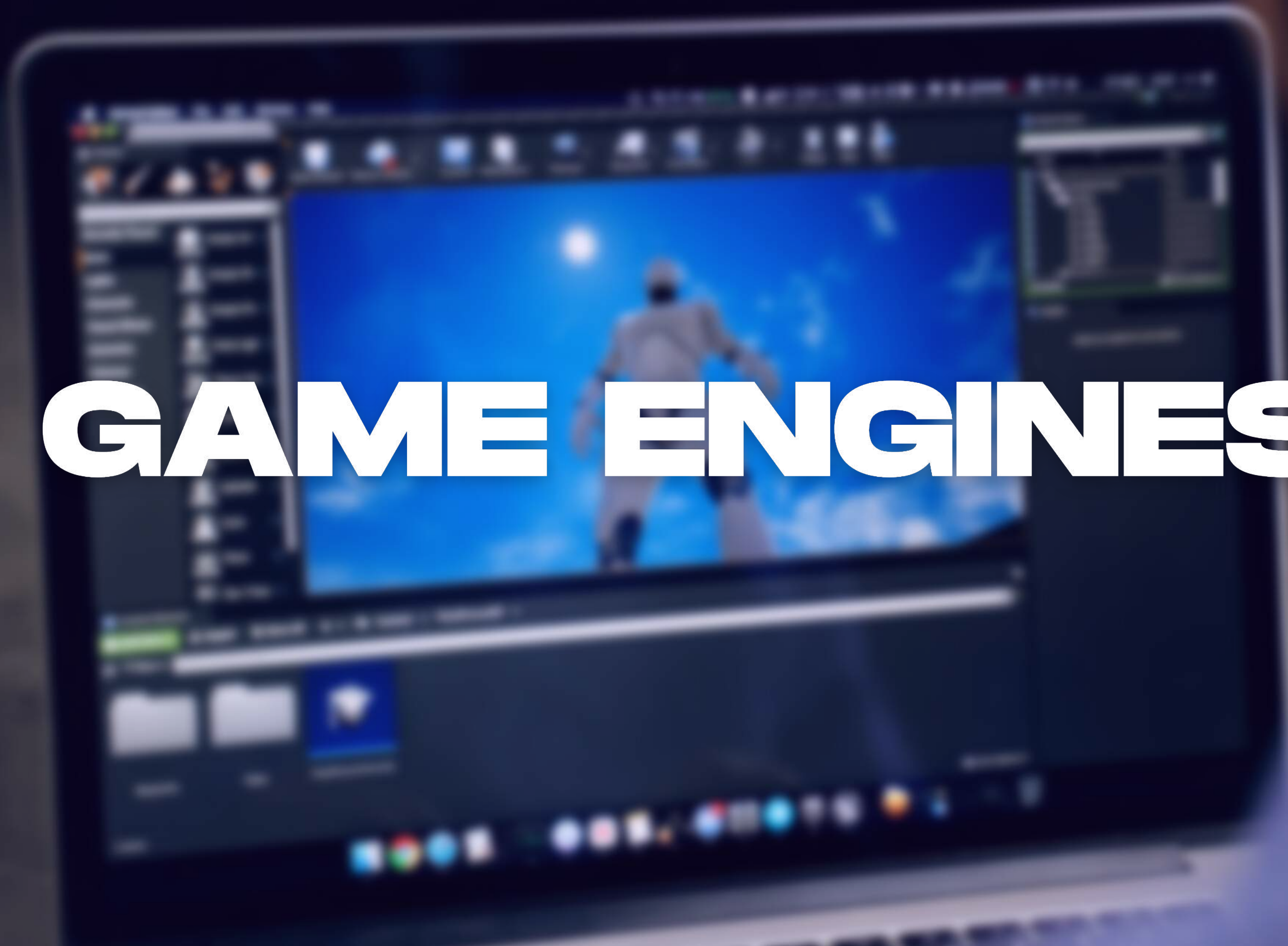
DEPARTMENTS

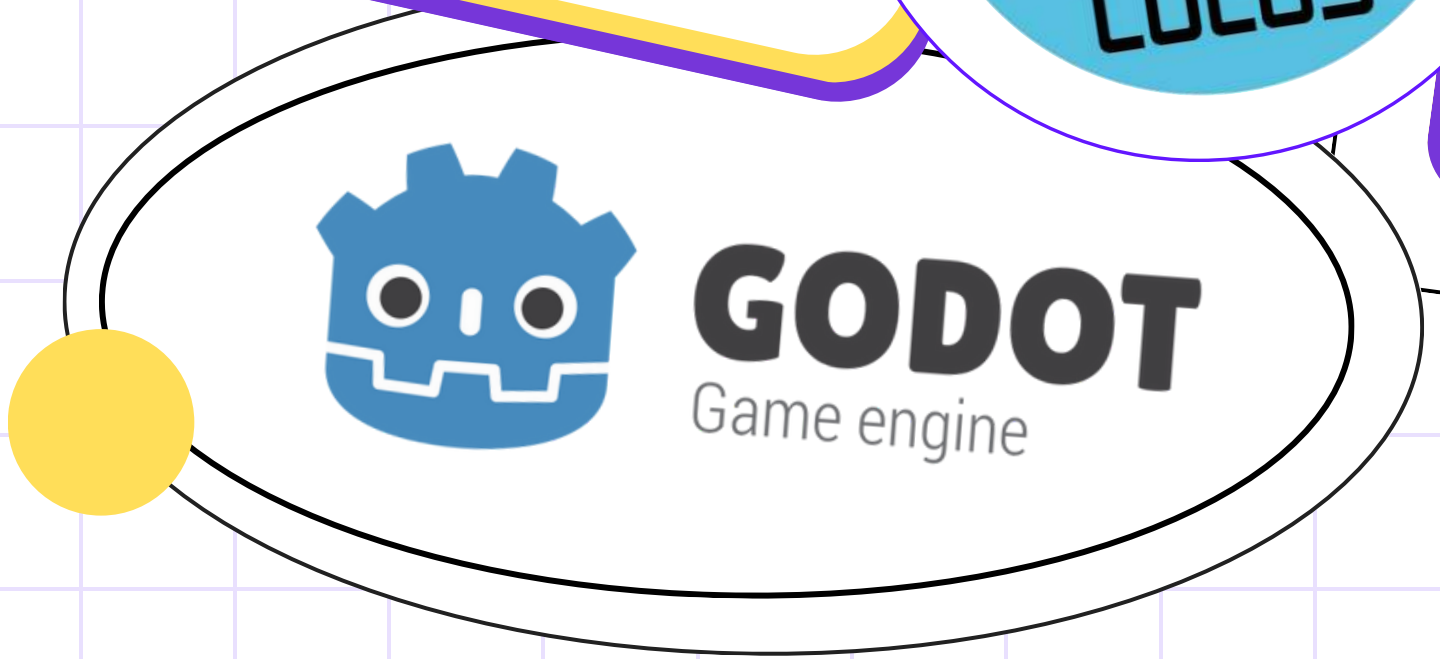
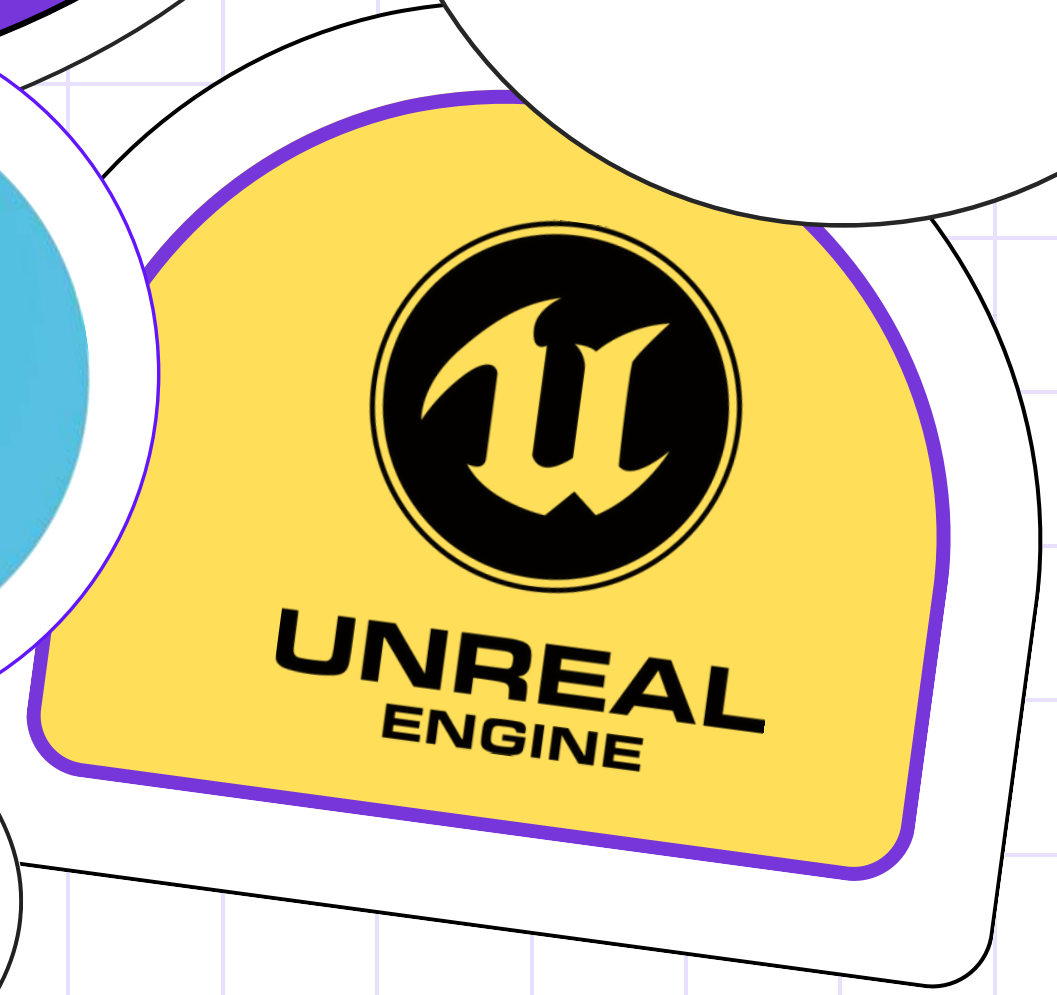
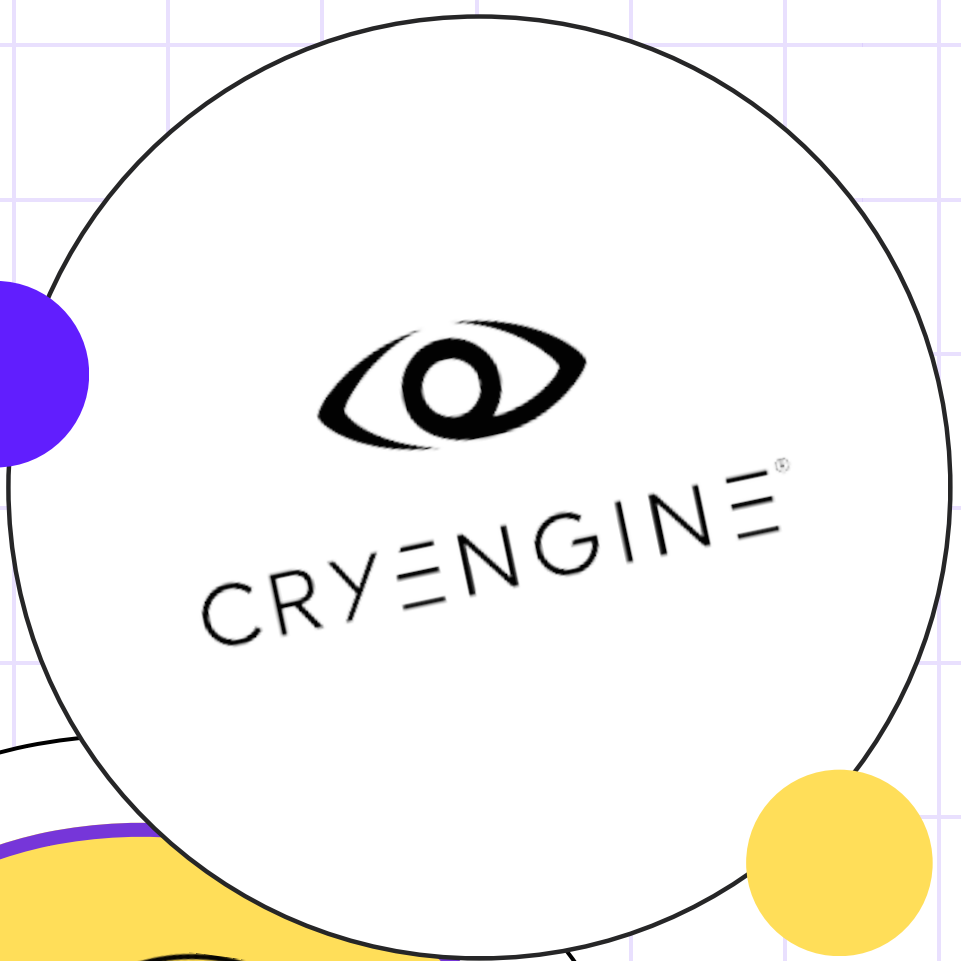




PRINCIPLES

GAME ENGINES





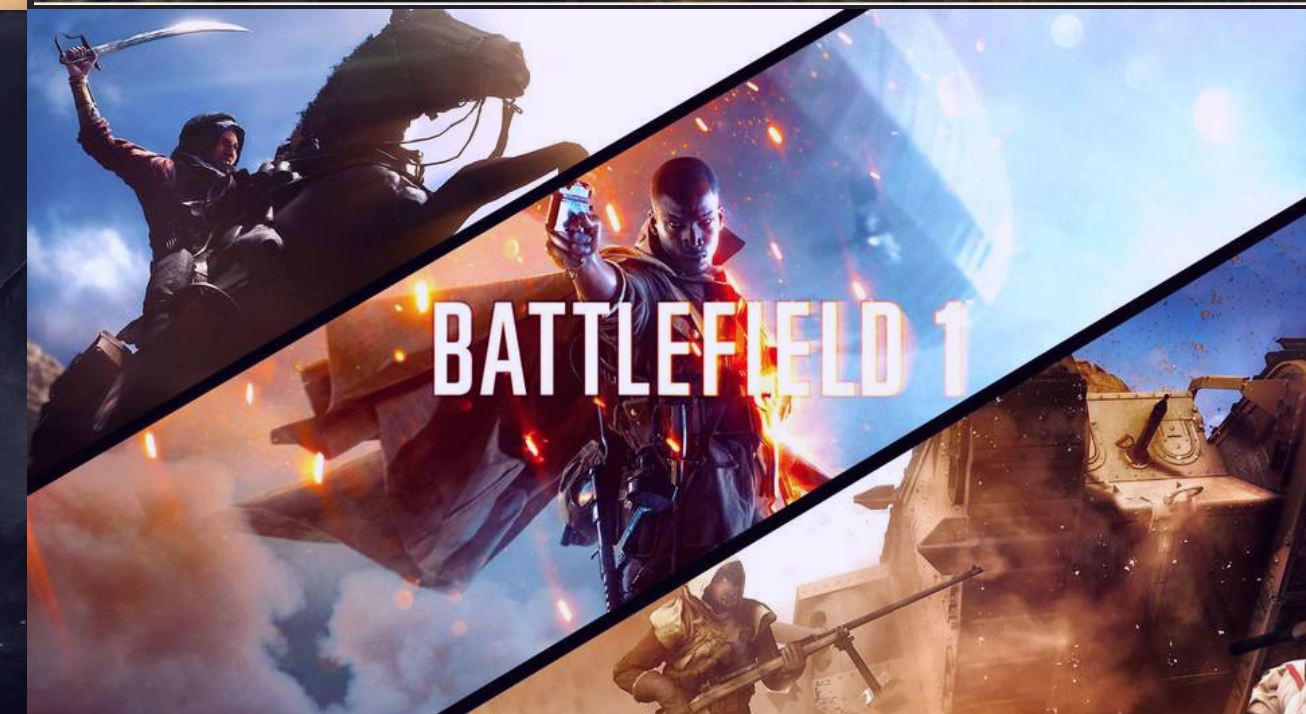


UNREAL
ENGINE





USE CASES





UNITY



UNITY



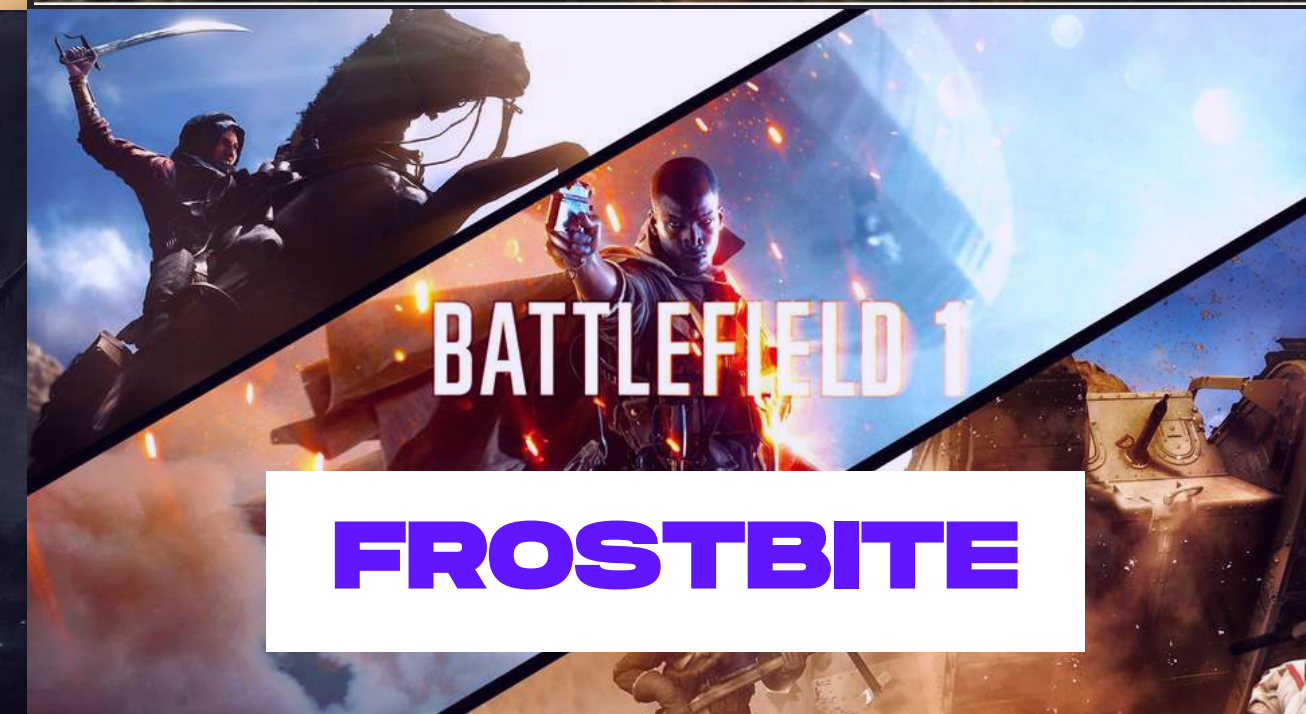
UNREAL



UNREAL



ANVIL



FROSTBITE



UNITY



UNITY



IW ENGINE


WHY UNREAL ENGINE?

WE HAVE SOMETHING TO SHOW YOU!

Ninety Days in Unreal Engine 5

Share



Watch on  YouTube



NETFLIX SERIES



**LOVE DEATH
+ ROBOTS**



ALLAHYAR

AND THE
LEGEND OF MARKHOR

THE
MANDALORIAN

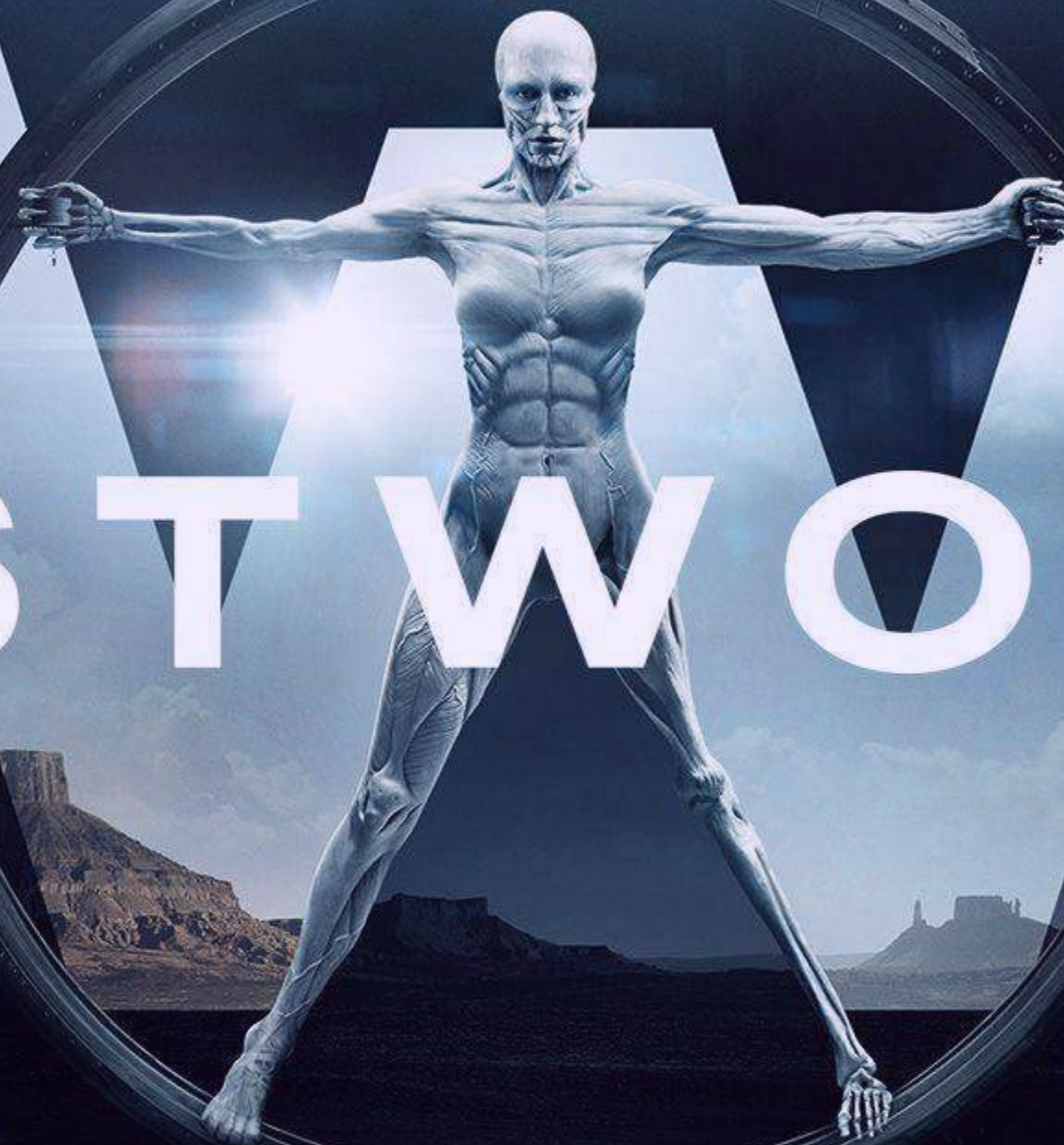




SHODRVEER



WESTWORLD





**IS IT REAL
OR UNREAL?**



UNREAL!



REAL!



UNREAL!



UNREAL!



UNREAL!



REAL!



VIZ PEOP

ΛΙΣ ΒΕΠΗ

A blurred, grayscale image of a person's face, smiling, serving as the background for the text.

REAL!



UNREAL!



UNREAL!



**LETS TALK
METAHUMANS**



QUICK DEMO

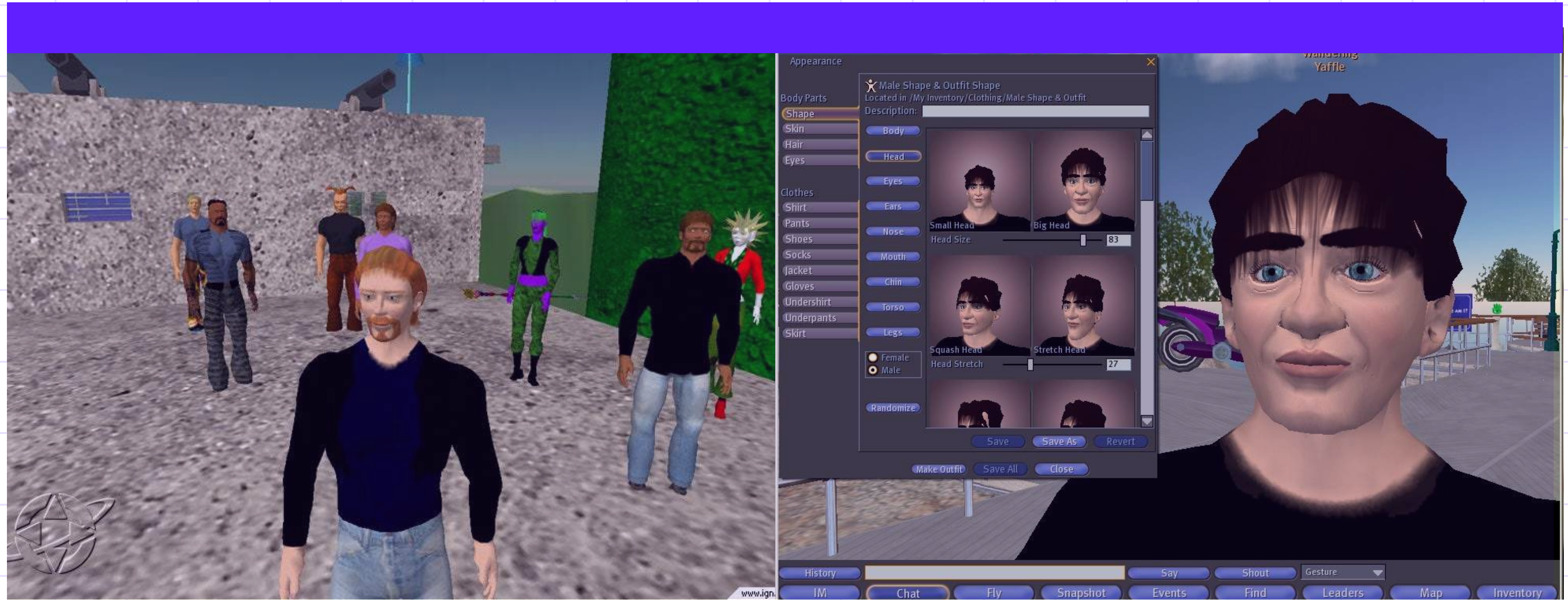


**WHAT'S
THE SCOPE?**

METAVEVERSE



VIRTUAL REALITY



NEVER FORGET WHERE YOU CAME FROM



GAMES

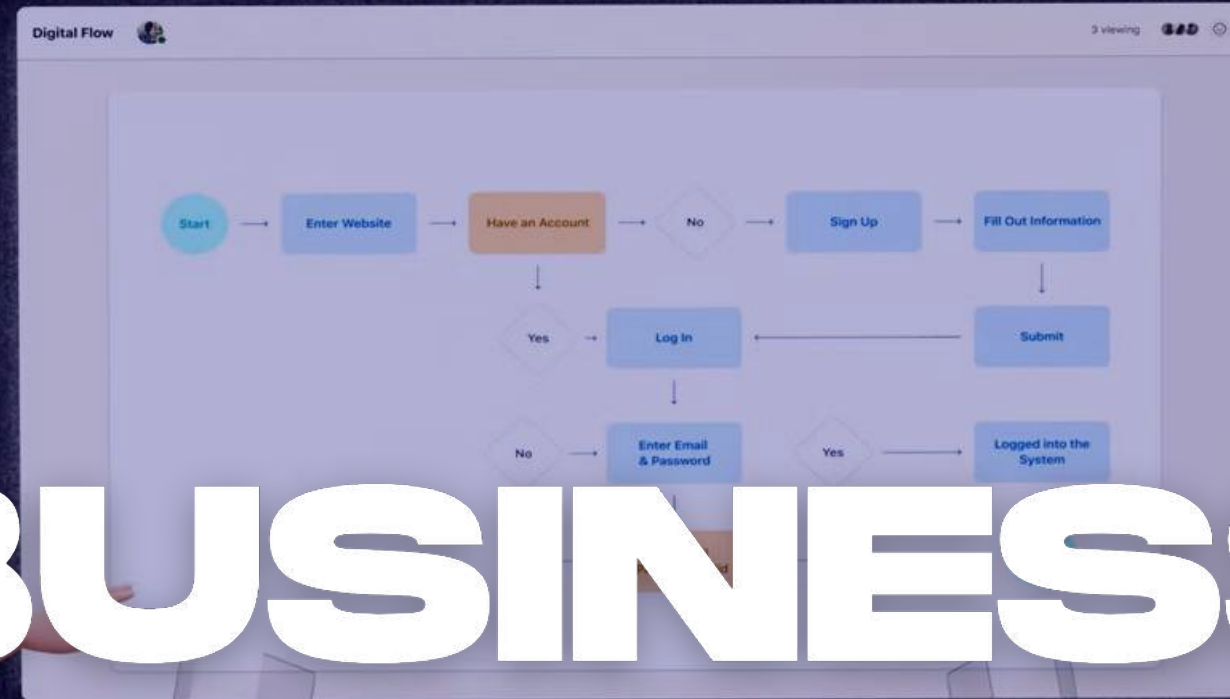
55 min

Workrooms Meeting
10.00 AM - 11.00 AM



Sharing screen
Lucy Tomkins

10:05 AM
Thu, Sept 10 2021



BUSINESS

FORTNITE + JACK
SUS

ENTERTAINMENT

ASTRO
NOMICAL



MEDICINE

A woman with a long braid, wearing a VR headset and holding a controller, is interacting with a virtual 3D model of a sphere. The scene is set in a creative studio with a brick wall, a window, a sofa, and a shelf filled with sketches and photos. The word "EDUCATION" is overlaid in large white letters.

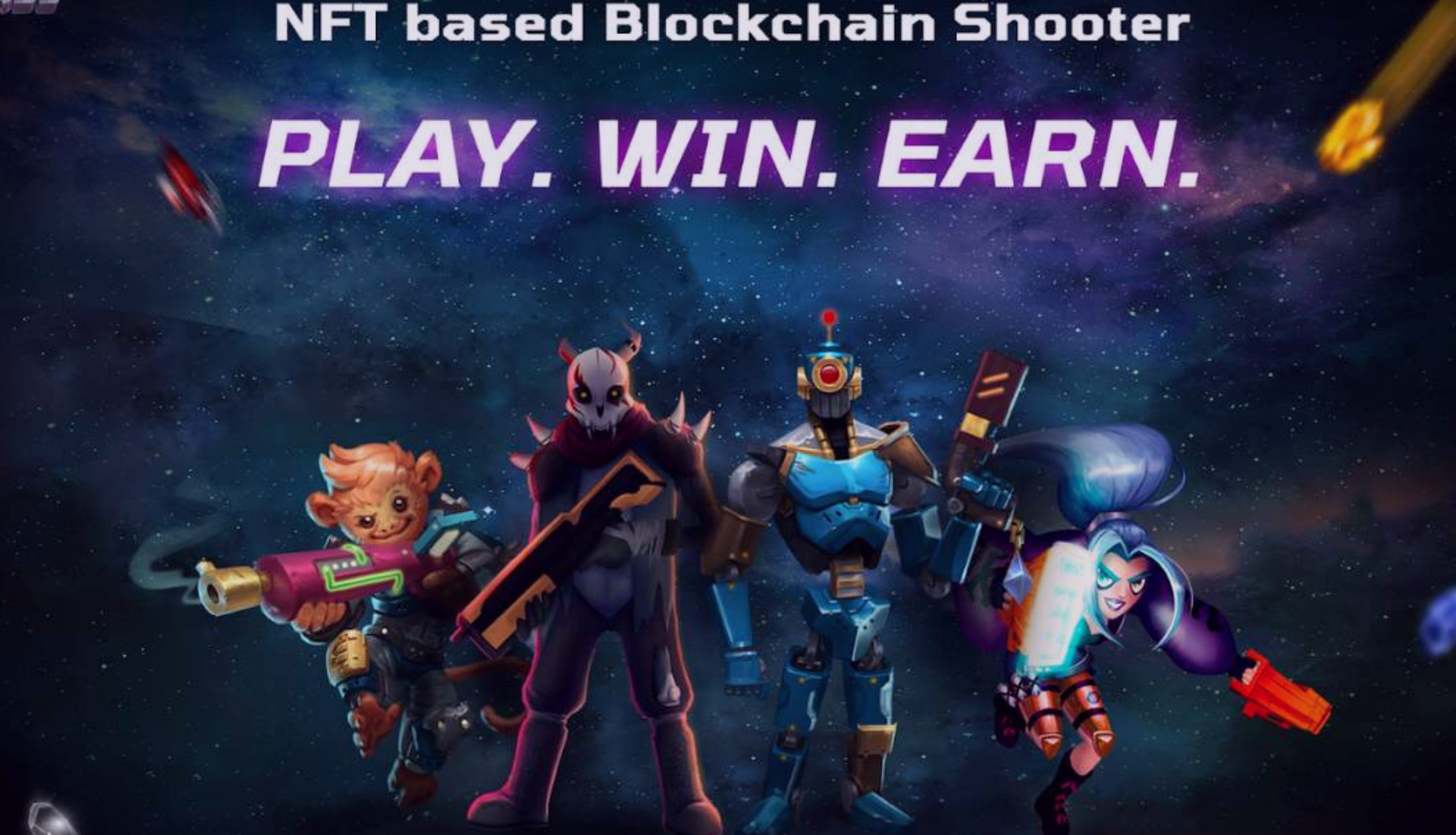
EDUCATION



**WHERE DOES
BLOCKCHAIN
COME IN//?**



STAR ATLAS
WORK IN PROGRESS



NFT based Blockchain Shooter
PLAY. WIN. EARN.



AXIE
INFINITY



SPLINTERLANDS

A close-up, low-angle shot of a black microphone with a silver mesh grille, positioned diagonally across the frame. The background is a deep blue gradient, illuminated by a bright, circular light source at the top center, creating a lens flare effect. The text 'SAWAL/JAWAB' is overlaid in a bold, white, sans-serif font across the middle of the image.

SAWAL/JAWAB

A woman in profile is shown on the left side of the image, looking towards a large, glowing, abstract light structure on the right. The structure is composed of numerous overlapping, curved streaks of light in shades of blue, pink, and white, creating a sense of depth and movement. The background is dark, making the light structure stand out prominently.

WHAT'S NEXT?